

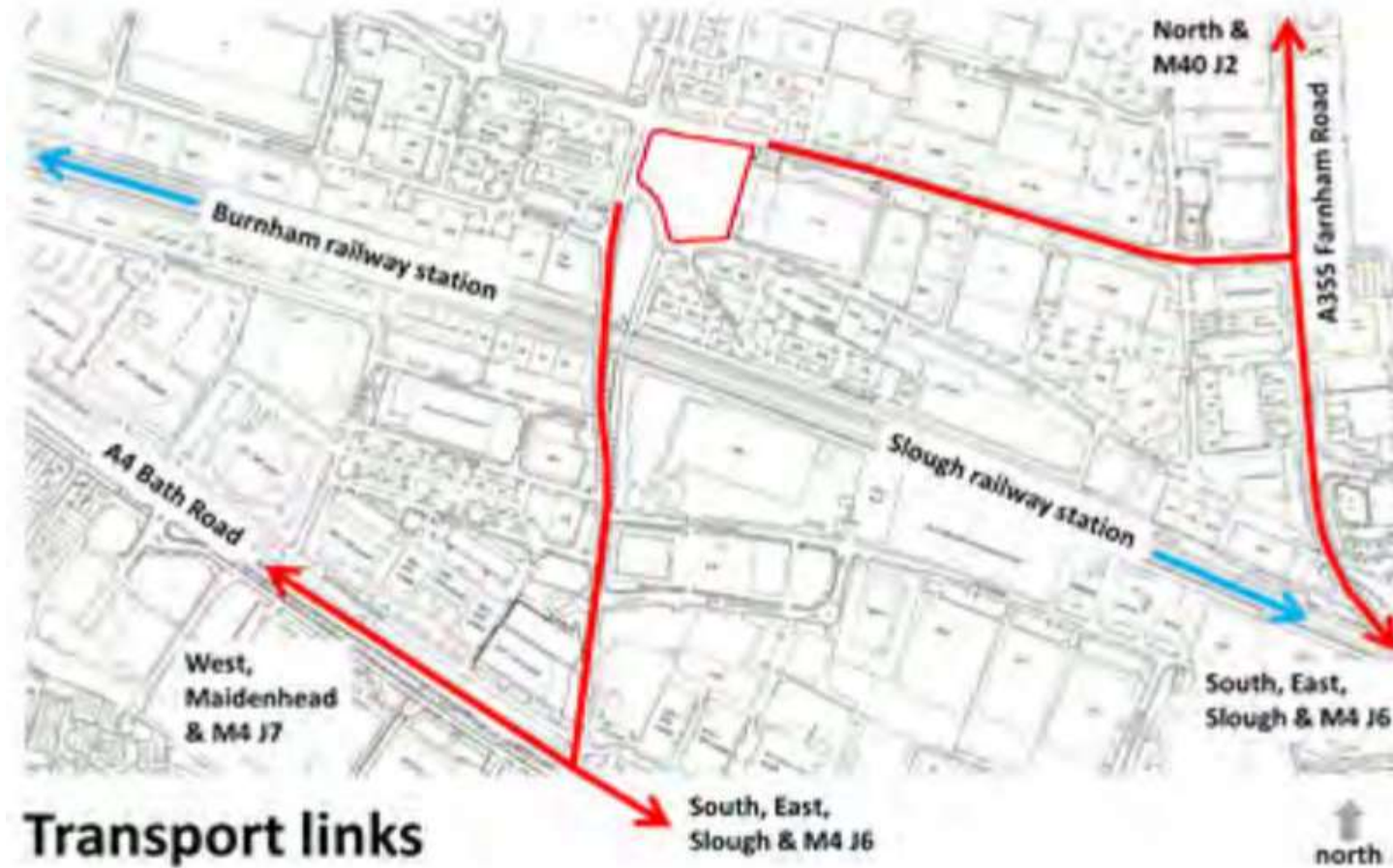
183-187 Liverpool Road

P/19650/000

Site Location Plan



Site Location Plan



Aerial Photograph of Site



Aerial Photograph of Site



View of site from Buckingham Ave



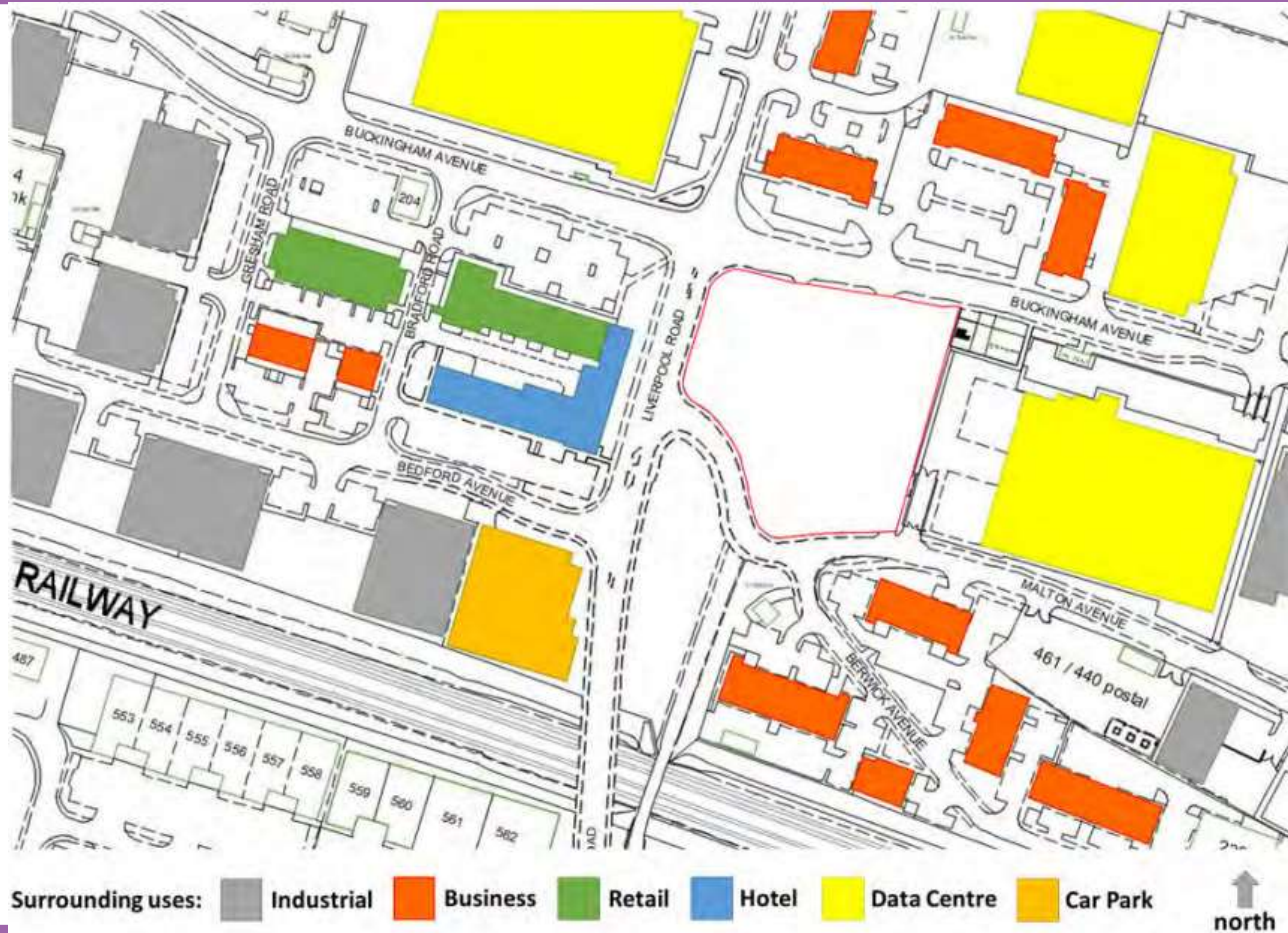
View of site from Leigh Road Park



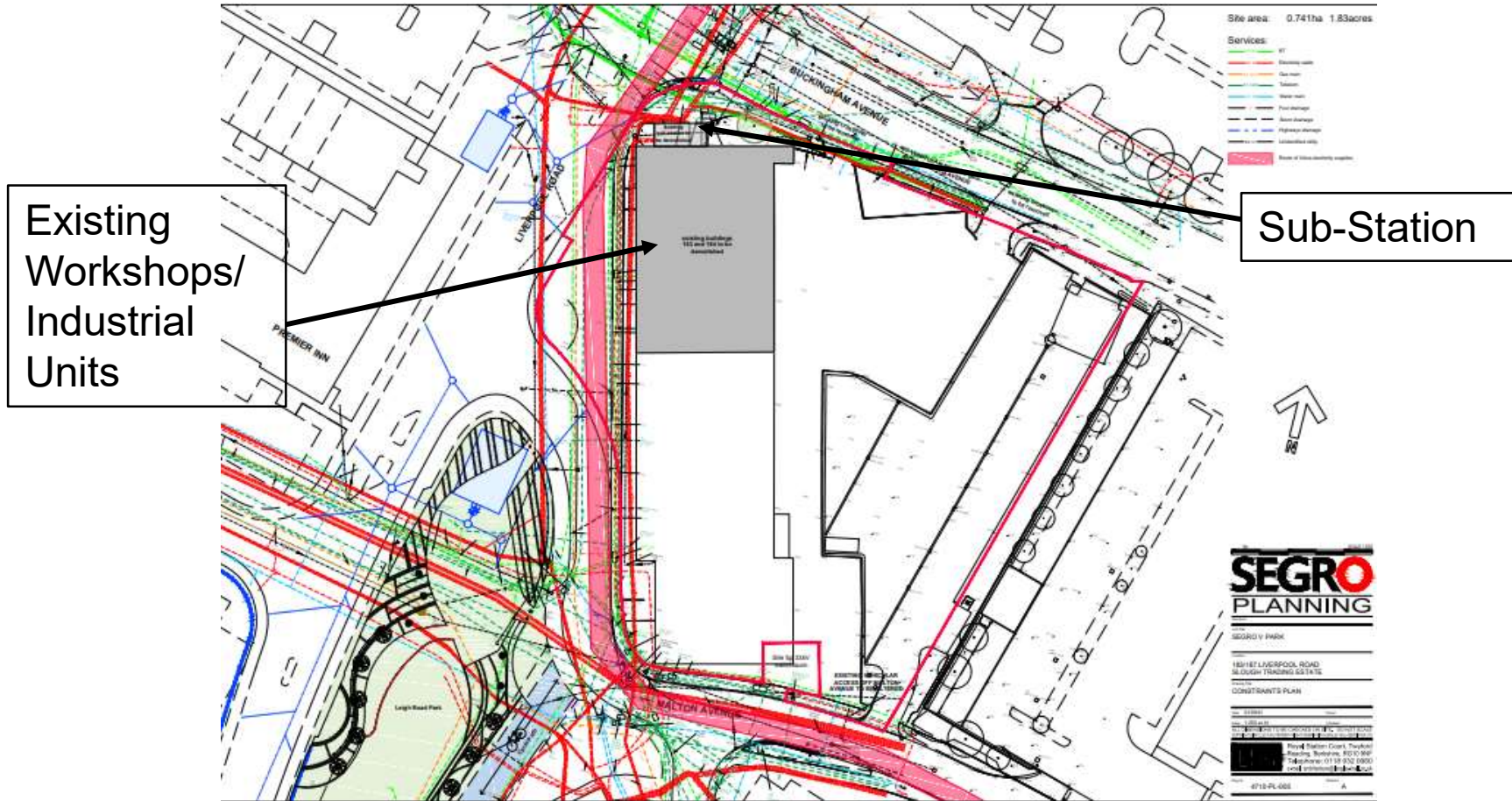
View of site from Liverpool Rd



Land Uses



Infrastructure & Constraints



The Development

Full planning application for the construction of a 7-storey building for a café (Class E (b)), office (Class E (g) (i)), light industrial (Class E (g) (iii)), general industrial (Class B2) and storage and distribution (Class B8) uses with ancillary office floorspace, means of access, servicing and loading facilities, car and cycle parking facilities, substation, drainage, public realm and landscaping, boundary treatments and other ancillary works.



The Development



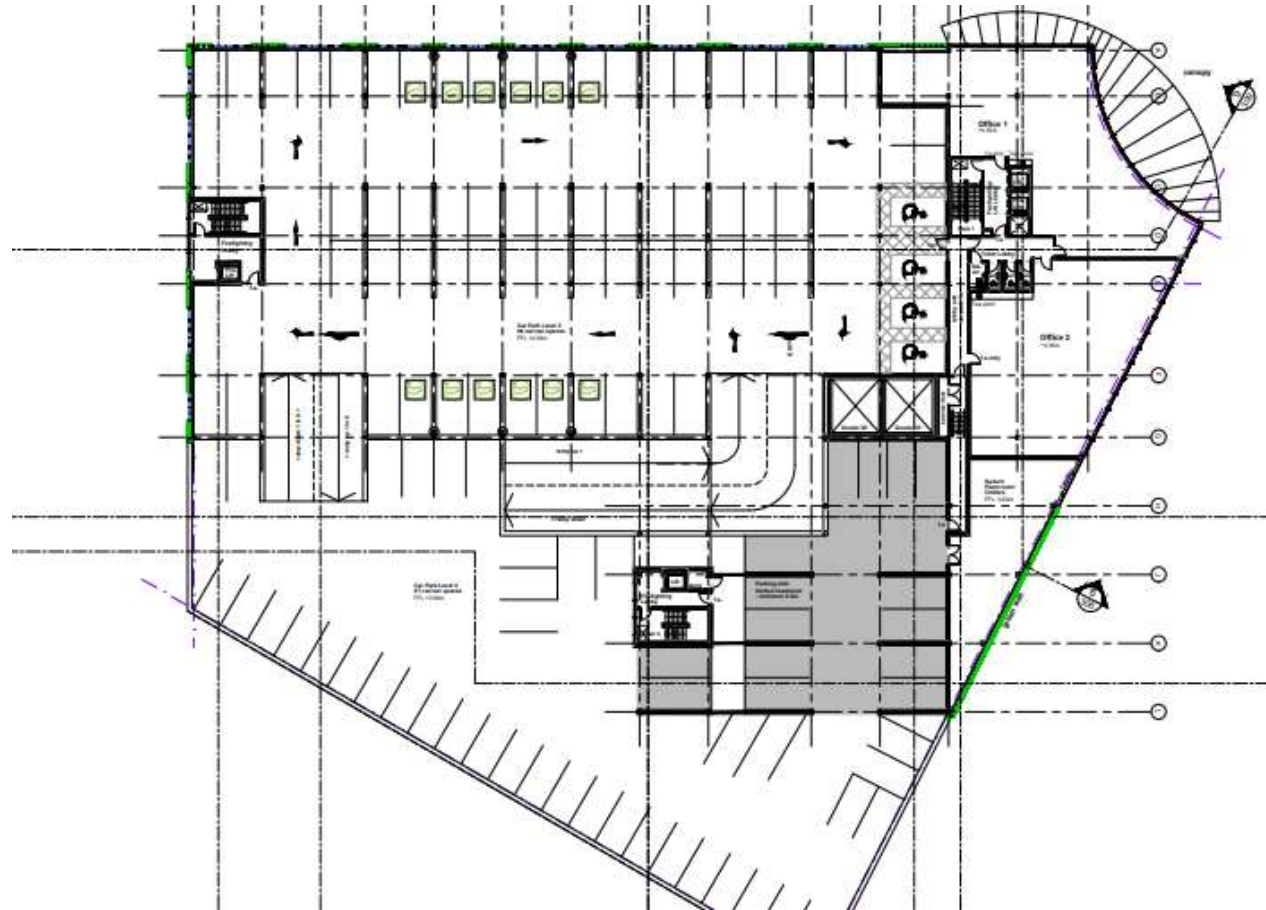
Proposed Site Plan



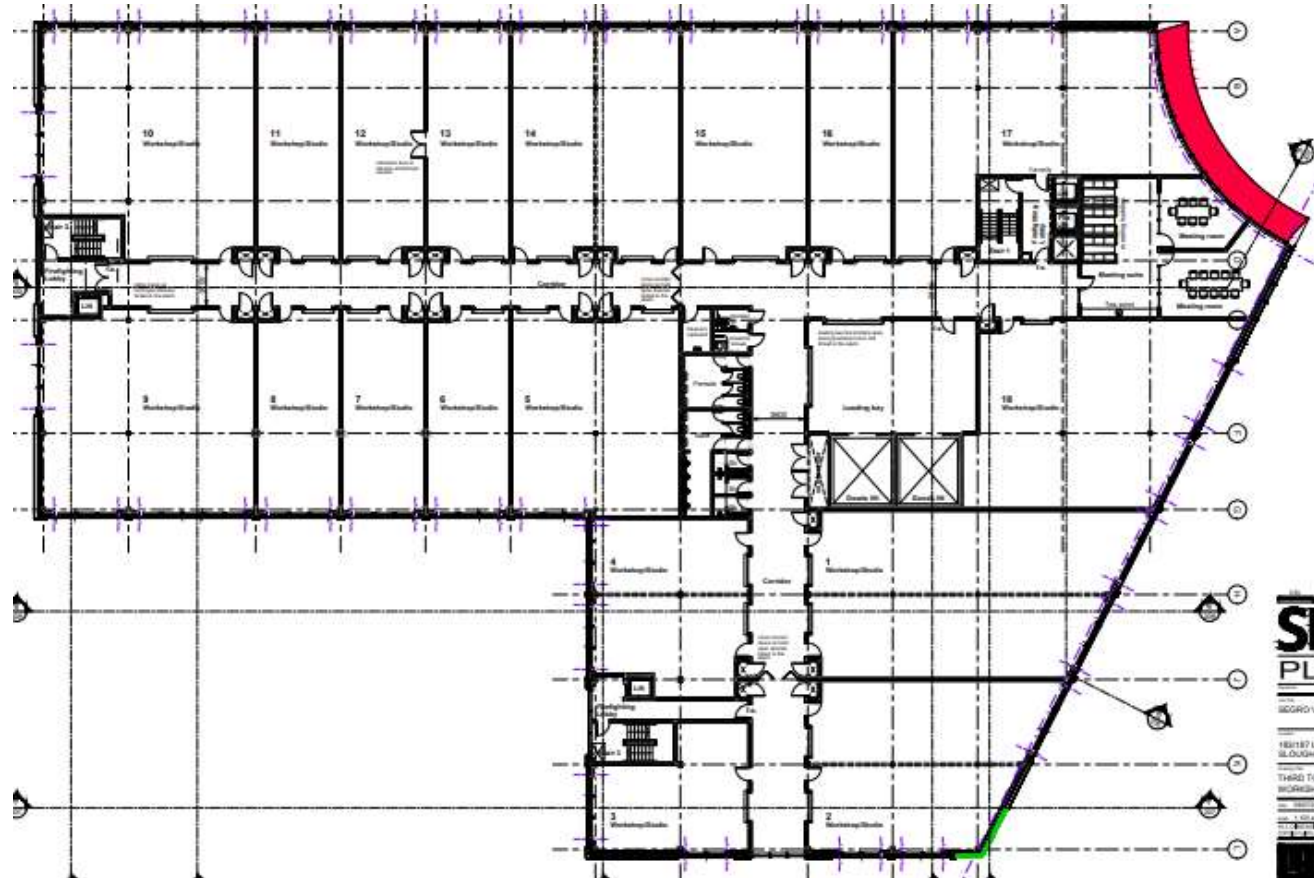
Ground Floor Plan



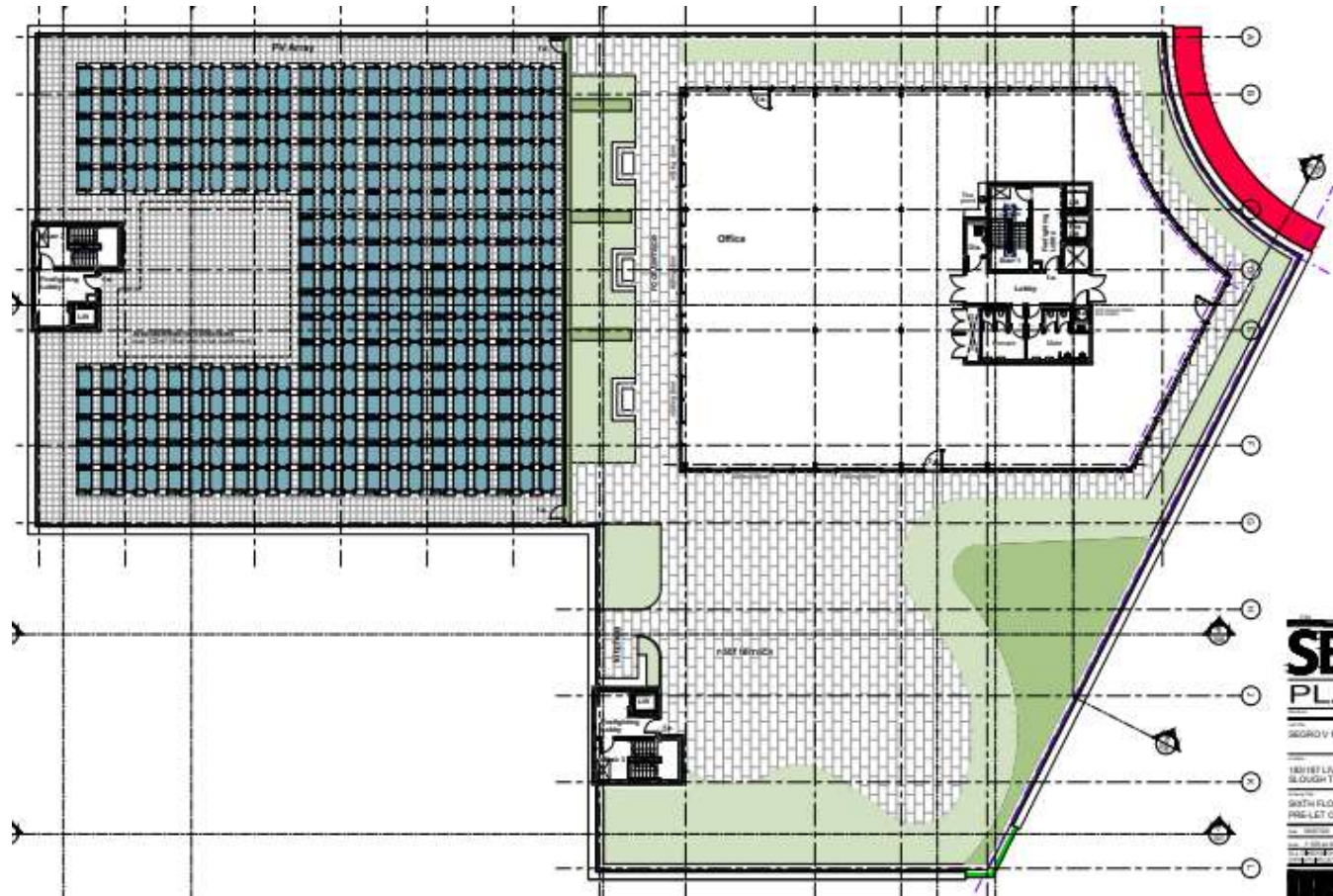
First Floor Plan (Offices) + Car Park



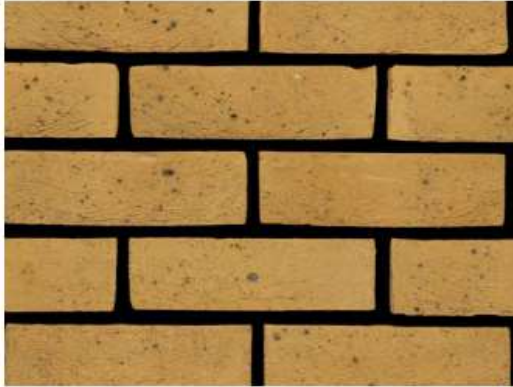
Levels 3-5 – Workshop Units



6th Floor Plan (Offices + Roof Terrace + PVs)



Materials + Design



Facing brickwork: London Yellow Multi Stock brick



Faceted curtain walling to main entrance



Overhang and curtain walling

Curtain walling to entrance façade will be faceted. Radius of façade is 16.5m. Angle between adjacent mullions is 5°. If glazing was curved, the centre of each glazed panel would only be offset by 17mm from its edge.



Structural glass balustrade, roof paving and planters



Roof terrace: Structural glass balustrade with stainless steel handrail
Porcelain paving tiles



Sedum roof



Green wall

Materials + Design



Car park hit-and-miss glass panels and green wall
(to match Bedford Avenue carpark)
Glass panels: Profilit glass



Glass canopy

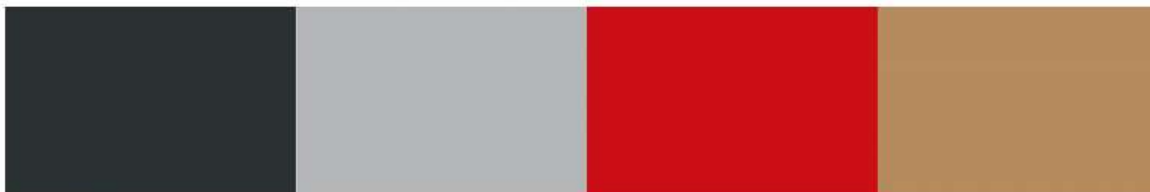


Trespa panels: Urban Grey



Louvre blade system

4.5.2 Palette of colours used in the façades of the building:



Curtain walling: RAL7016 Anthracite

Overhang: RAL9006 Silver metallic

Fascia: RAL 3020 Signal Red

Bris-soleil: RAL1011 Brown Beige

CGIs (Eastern View from Buckingham Ave)



View Looking South along Liverpool Road



View from Leigh Road Park



End

